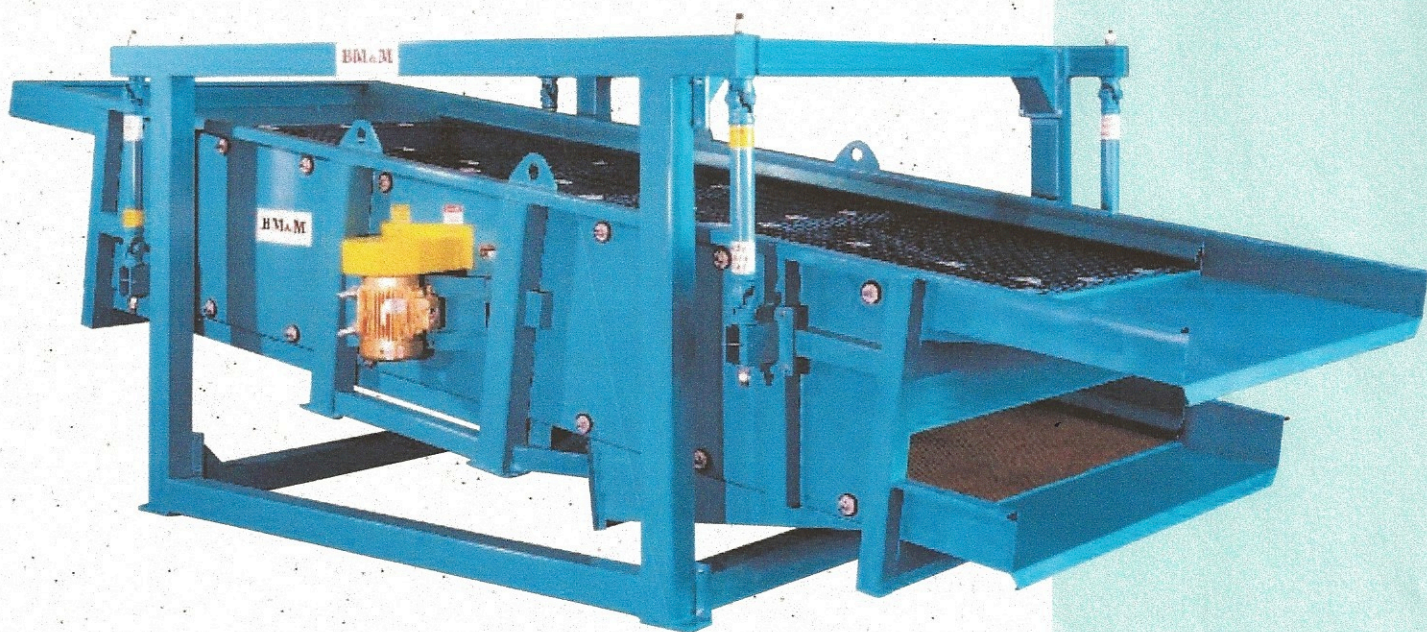


BM&M

SCREENING SOLUTIONS

Chip Screens

*Scalping, Sizing, Sawdust Removal
& Bark Sorting*



❖ **3 Year Warranty** ❖

1-800-663-0323

Capacity

* Nominal Capacities based on the following conditions:

- Uniform feed rate
- Total screen surface utilization
- "Standard Industry" chip quality targets
- Chips produced from whole logs or sawmill waste by modern well maintained equipment

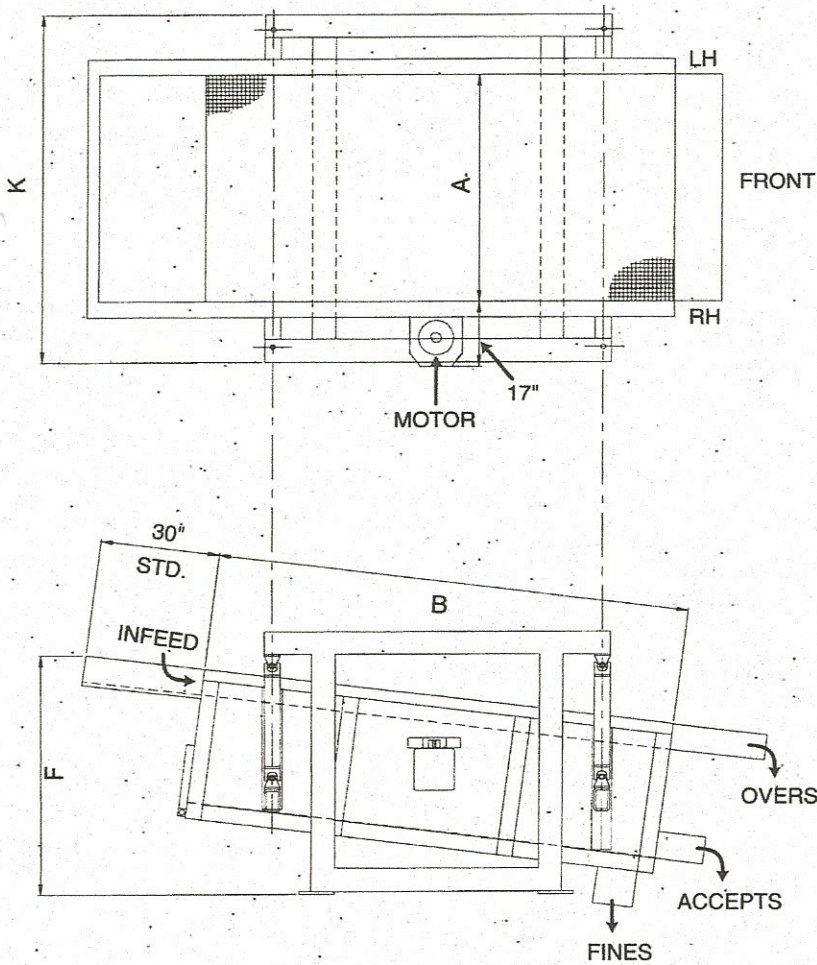
1 Unit = 200 ft of loose packed chips

1 Unit = 2 tons of loose-packed chips having a density of 20 lbs/cubic foot

1 Unit = 5.66 M³

1 Unit = .88 of a cord

| SIZE | CAPACITY * | | | | | Weight Lbs. |
|-----------|------------|-----------|--------|-----|------|-------------|
| | A x B | Units/Hr. | M3/Hr. | HP | F | |
| 3' x 8' | 8 | 44 | 5 | 59" | 64" | 3500 |
| 3' x 10' | 10 | 56 | 5 | 61" | 64" | 3700 |
| 4' x 8' | 12 | 67 | 5 | 59" | 76" | 4000 |
| 4' x 10' | 15 | 84 | 6 | 61" | 76" | 4200 |
| 4' x 12' | 19 | 106 | 5 | 62" | 76" | 4600 |
| 4' x 14' | 21 | 118 | 5 | 70" | 76" | 5000 |
| 5' x 10' | 21 | 118 | 5 | 64" | 92" | 5200 |
| 5' x 12' | 24 | 134 | 5 | 67" | 92" | 5900 |
| 5' x 14' | 28 | 157 | 5 | 68" | 92" | 6300 |
| 6' x 10' | 24 | 134 | 5 | 64" | 104" | 6200 |
| 6' x 12' | 28 | 157 | 5 | 67" | 104" | 6600 |
| 6' x 14' | 34 | 190 | 5 | 70" | 104" | 6900 |
| 6' x 16' | 40 | 224 | 7 | 73" | 104" | 7300 |
| 7' x 10' | 26 | 146 | 5 | 64" | 116" | 6700 |
| 7' x 12' | 34 | 190 | 7 | 67" | 116" | 6900 |
| 7' x 14' | 40 | 224 | 7 | 70" | 116" | 7400 |
| 7' x 15' | 44 | 246 | 7 | 70" | 116" | 7600 |
| 7' x 16' | 46 | 257 | 7 | 73" | 116" | 7900 |
| 7' x 18' | 50 | 280 | 7 | 79" | 116" | 8100 |
| 8' x 10' | 32 | 179 | 7 | 64" | 128" | 7000 |
| 8' x 12' | 40 | 224 | 7 | 71" | 128" | 7500 |
| 8' x 14' | 48 | 268 | 7 | 73" | 128" | 8000 |
| 8' x 16' | 54 | 302 | 10 | 77" | 128" | 8300 |
| 8' x 18' | 60 | 336 | 10 | 79" | 128" | 8700 |
| 8' x 20' | 66 | 369 | 10 | 81" | 128" | 9200 |
| 9' x 12' | 44 | 246 | 7 | 74" | 144" | 7900 |
| 9' x 14' | 51 | 285 | 7 | 78" | 144" | 8500 |
| 9' x 16' | 58 | 324 | 10 | 80" | 144" | 9100 |
| 9' x 18' | 65 | 364 | 10 | 84" | 144" | 9700 |
| 9' x 20' | 72 | 403 | 10 | 85" | 144" | 10,100 |
| 10' x 12' | 48 | 268 | 7 | 74" | 156" | 9100 |
| 10' x 14' | 56 | 313 | 10 | 79" | 156" | 9500 |
| 10' x 16' | 64 | 358 | 10 | 81" | 156" | 9900 |
| 10' x 18' | 72 | 403 | 10 | 84" | 156" | 10,600 |
| 10' x 20' | 80 | 481 | 10 | 85" | 156" | 11,100 |
| 12' x 12' | 58 | 324 | 10 | 74" | 180" | 11,000 |
| 12' x 14' | 68 | 380 | 10 | 78" | 180" | 11,500 |
| 12' x 16' | 77 | 431 | 10 | 80" | 180" | 12,000 |
| 12' x 18' | 86 | 481 | 10 | 84" | 180" | 12,600 |
| 12' x 20' | 100 | 560 | 10 | 85" | 180" | 13,200 |
| 13' x 16' | 84 | 470 | 10 | 80" | 192" | 12,900 |
| 13' x 18' | 95 | 530 | 10 | 84" | 192" | 13,500 |
| 13' x 20' | 108 | 600 | 15 | 85" | 192" | 14,000 |
| 13' x 20' | 125 | 700 | 20 | 97" | 192" | 15,400 |



HC Model

Specifications

- Sizes - 24 ft². through 260 ft².
3 ft. through 13 ft. wide
8 ft. through 20 ft. long
- Number of decks available - 1 through 3
- Material of construction - Mild Steel.
- Construction design - Welded steel construction for drive/screen assembly
 - Fully stress relieved
 - Bolted Structural Steel Support Stand
- All screen surfaces are tensioned for high screening efficiency as a standard.
- Quick Change screen access door
- Dynamically Balanced design - Horizontal loading is <3% of maximum vertical loading
- 300 RPM operating speed at a 2" diameter stroke
- Motor - 5 HP to 20 HP, TEFC, 1800 RPM, Customer preferred brand
- Fines pan air lancing ports for quick pan cleanouts by your operators
- Infeed landing deck c/w a bolted steel wear liner
- Custom discharge Chutes designed for your application

Options

- Double Single Construction - high capacity single cut option
- Counter Flow Construction - provides super high fines removal efficiency
- Wear liners - UHMW or Stainless Steel
- Dust Cover Assembly - steel bolted and gasketed construction
- Central Hanger lubrication system
- Stainless Steel Screen Elements, Fines Pan, Etc.
- Drive Bearing Temperature Monitor - RTD
- Open Bottom Construction - no fines pan
- Suspended Construction - overhead building supports, (deletes support stand)
- Ball Box Screen Cleaning - steel frames and 2" diameter high bounce balls

Ball-Decks

BM&M screens can be equipped with "Ball-Decks" to assist in keeping the fines screen clean when screen openings are less than 3/16" or when the product is moist and sticky.

The active motion propels the captive balls to constantly strike the underside of the fines screens thus dislodging wedged-in particles or near-sized plugs.

Depending on the application, the balls are a 2" diameter synthetic rubber or special compound.

BM&M screens can be equipped with a variety of mesh or perforated metal screens in many materials.

